

**2024**  
**HARLAN CO.**  
**SAFETY DAYS**  
**DAY 2**  
**CONTEST**

**TEAM**   
**KENTUCKY.**

---

**ENERGY AND  
ENVIRONMENT CABINET**

**DIVISION OF MINE SAFETY**

## 2024 Harlan County Safety Days Day 2 Statement

Thanks for responding to our call for help. You are located at the fresh air base at the Big Bear #2 mines. Our mines is a small mines. At 8 pm we had a 5 man crew enter the section to prepare for a unit move. We have been dealing with low O<sub>2</sub>, methane and adverse roof conditions. The Fireboss was unable to make the section due to unsafe roof and low O<sub>2</sub>. All attempts to contact the missing miners have been unsuccessful. A fresh air base was established all power inby has been de-energized and the fan is being monitored. This is all the information we have at this time please help find our missing miners. State and federal are on scene along with back up mine rescue teams. Good Luck.

## **Harlan Co. Safety Days Day 2 Written Instructions**

**Blowing fan is running intake comes in the #1 entry and returns out the #3 entry. Fan cannot be stopped stalled or reversed.**

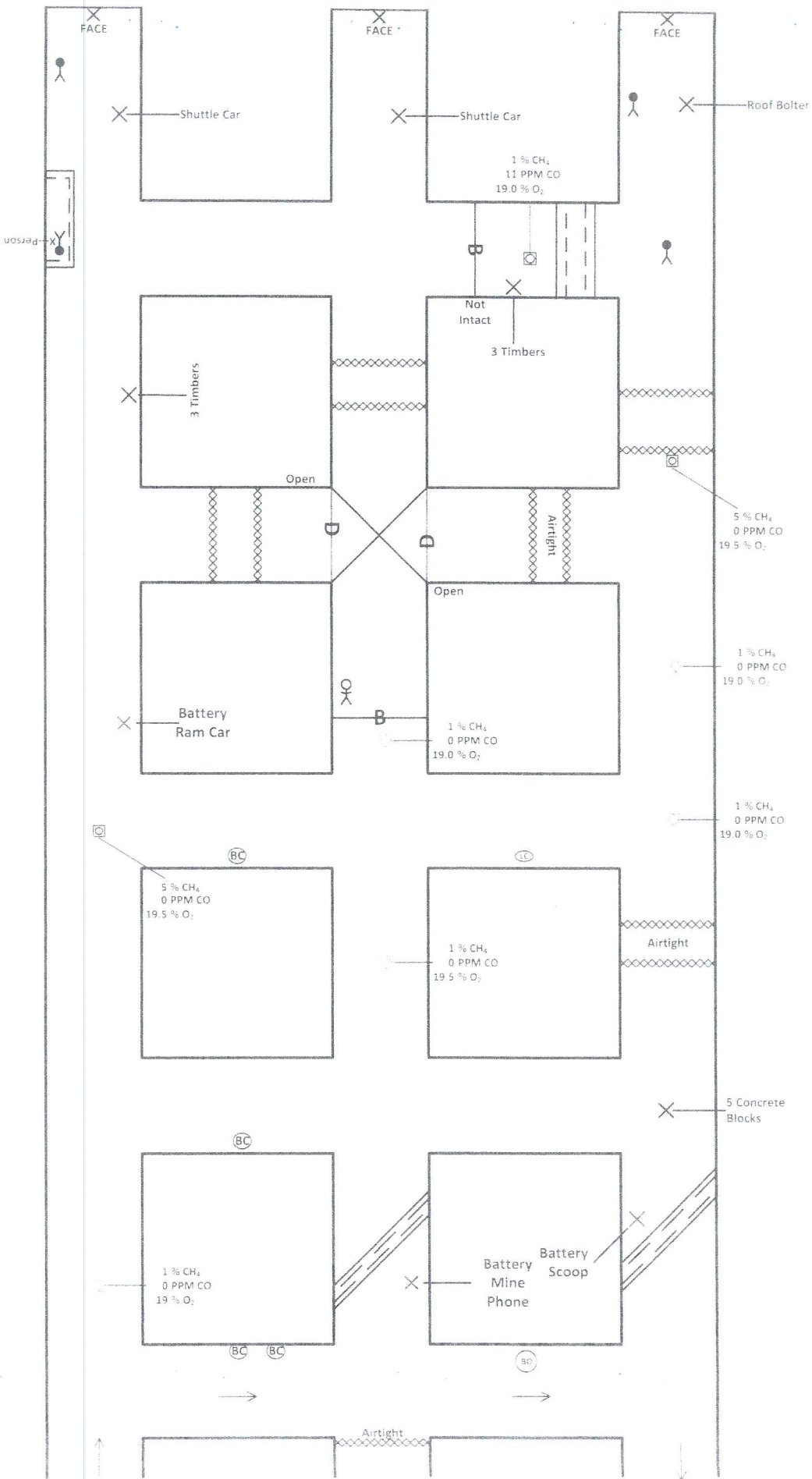
**Mine Map is up to date.**

**Bring all survivors to the fresh air base.**

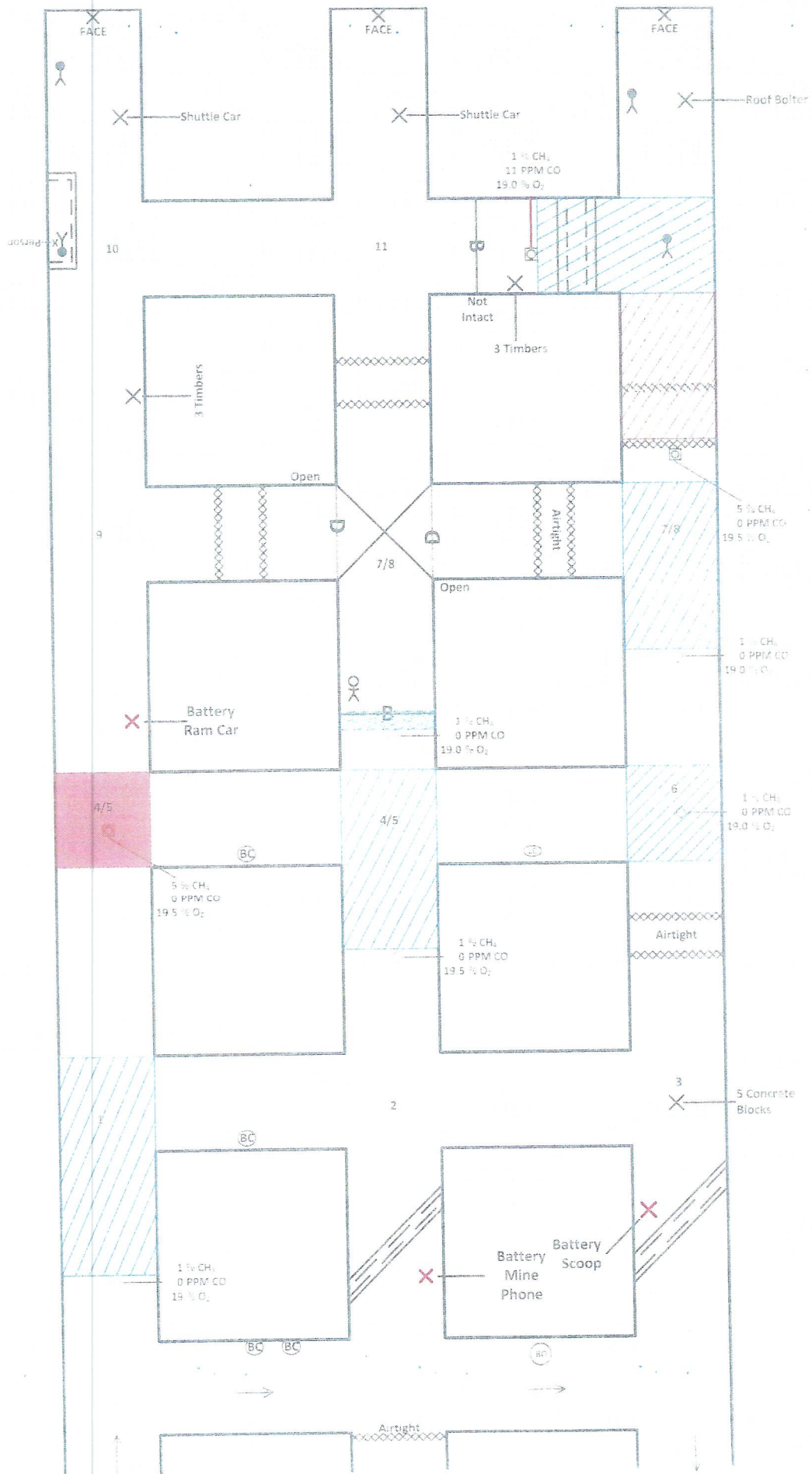
**Explore all areas of the mines that can be done safely.**

The diagram illustrates a mine layout with various rooms and air flow paths. Key features include:

- Rooms and Equipment:** Shuttle Car, 3 Timbers, Battery Ram Car, Not Intact (3 Timbers), Open, 5 Concrete Blocks, Battery Mine Phone, Battery Scoop.
- Air Flow and Barriers:** Open, Airtight, Not Intact, 3 Timbers, 5 Concrete Blocks.
- Gas Concentrations:**
  - 1 % CH<sub>4</sub>, 11 PPM CO, 19.0 % O<sub>2</sub>
  - 5 % CH<sub>4</sub>, 0 PPM CO, 19.5 % O<sub>2</sub>
  - 1 % CH<sub>4</sub>, 0 PPM CO, 19.0 % O<sub>2</sub>
  - 1 % CH<sub>4</sub>, 0 PPM CO, 19.5 % O<sub>2</sub>
  - 1 % CH<sub>4</sub>, 0 PPM CO, 19.0 % O<sub>2</sub>
  - 1 % CH<sub>4</sub>, 0 PPM CO, 19.5 % O<sub>2</sub>
  - 1 % CH<sub>4</sub>, 0 PPM CO, 19.0 % O<sub>2</sub>
  - 1 % CH<sub>4</sub>, 0 PPM CO, 19.5 % O<sub>2</sub>
- Other Labels:** FACE, Roof Bolter, Person, BC, CC, BO, Airtight, Open, Not Intact, 3 Timbers, 5 Concrete Blocks, Battery Mine Phone, Battery Scoop.

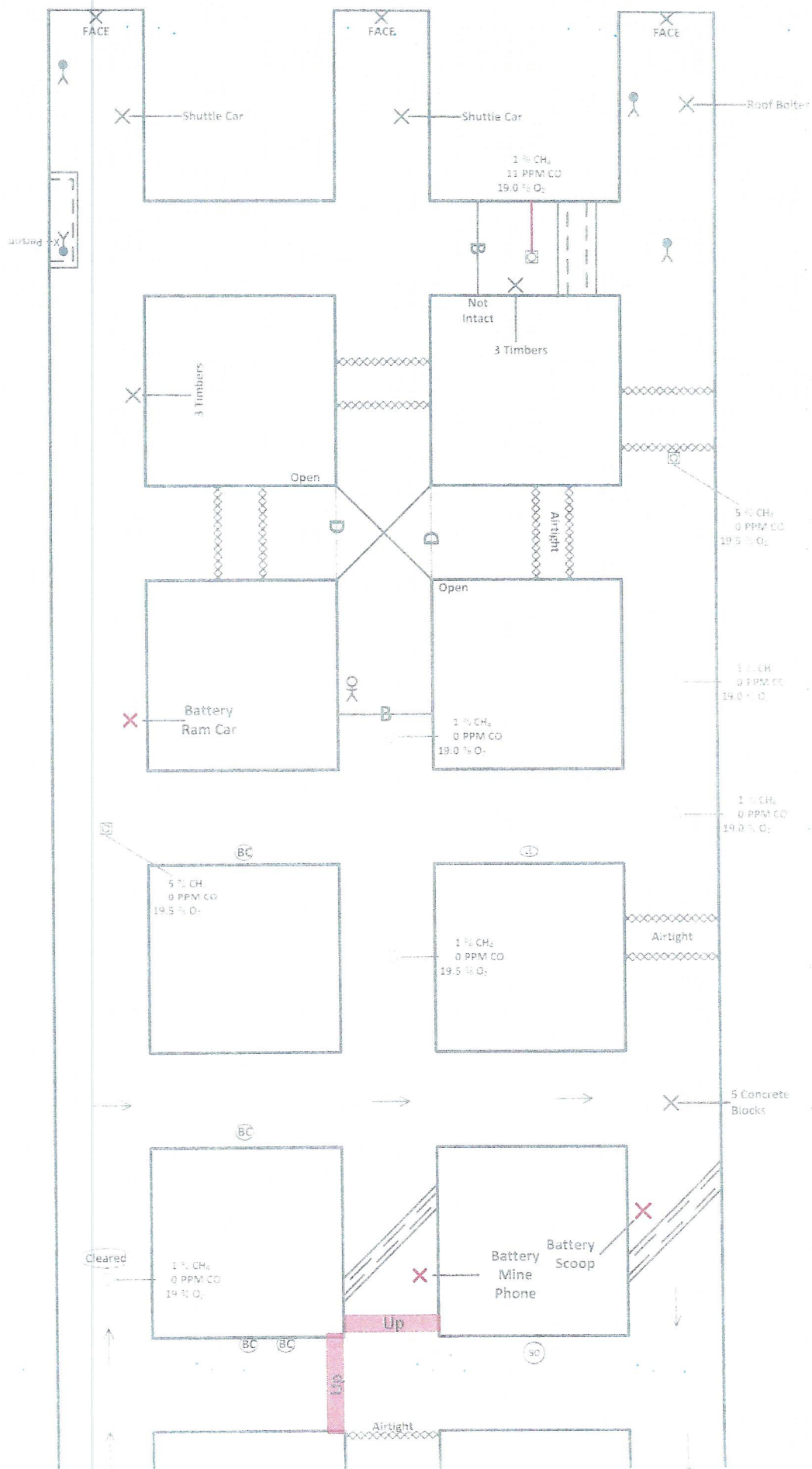


# Harlan County Safety Days Day 2

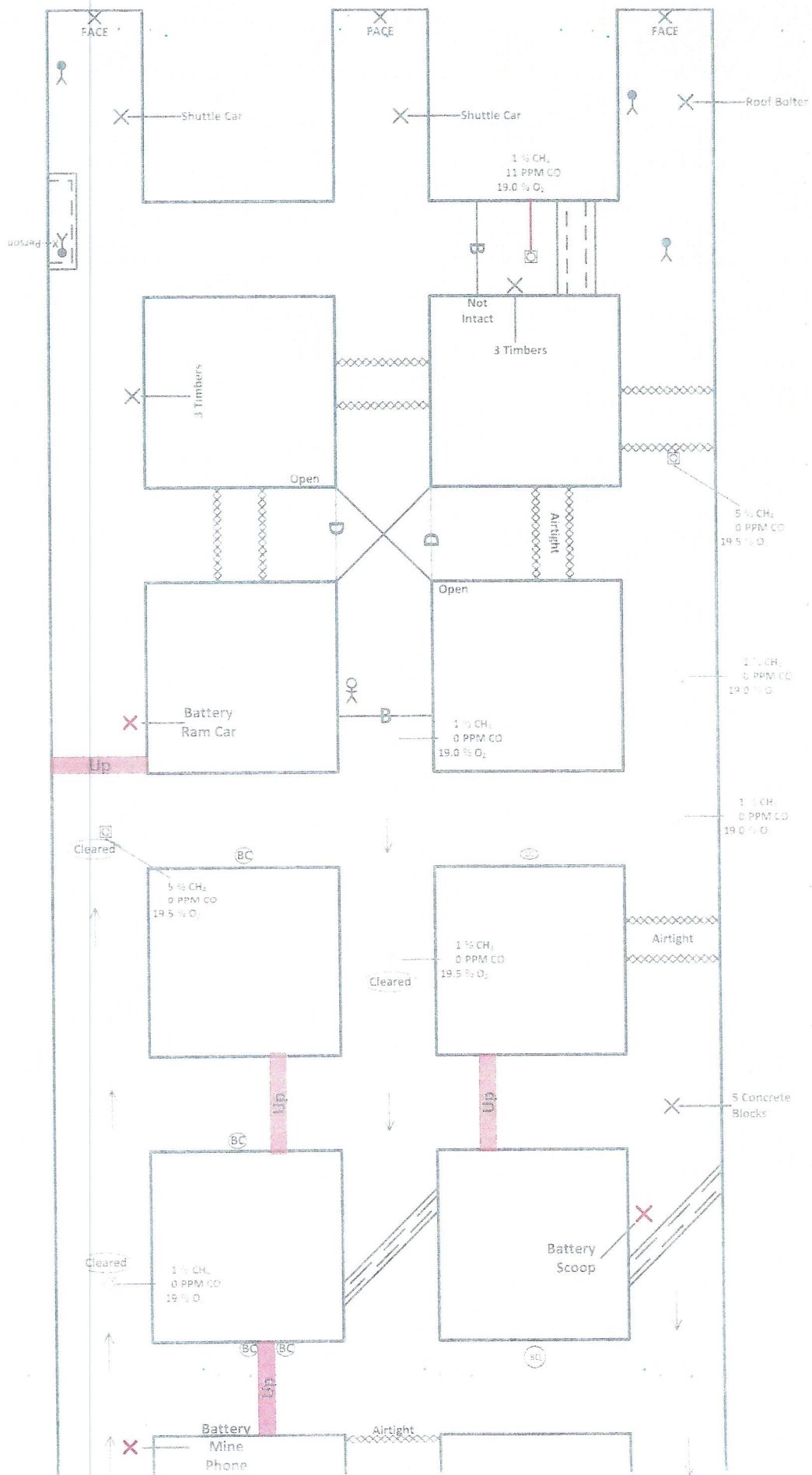




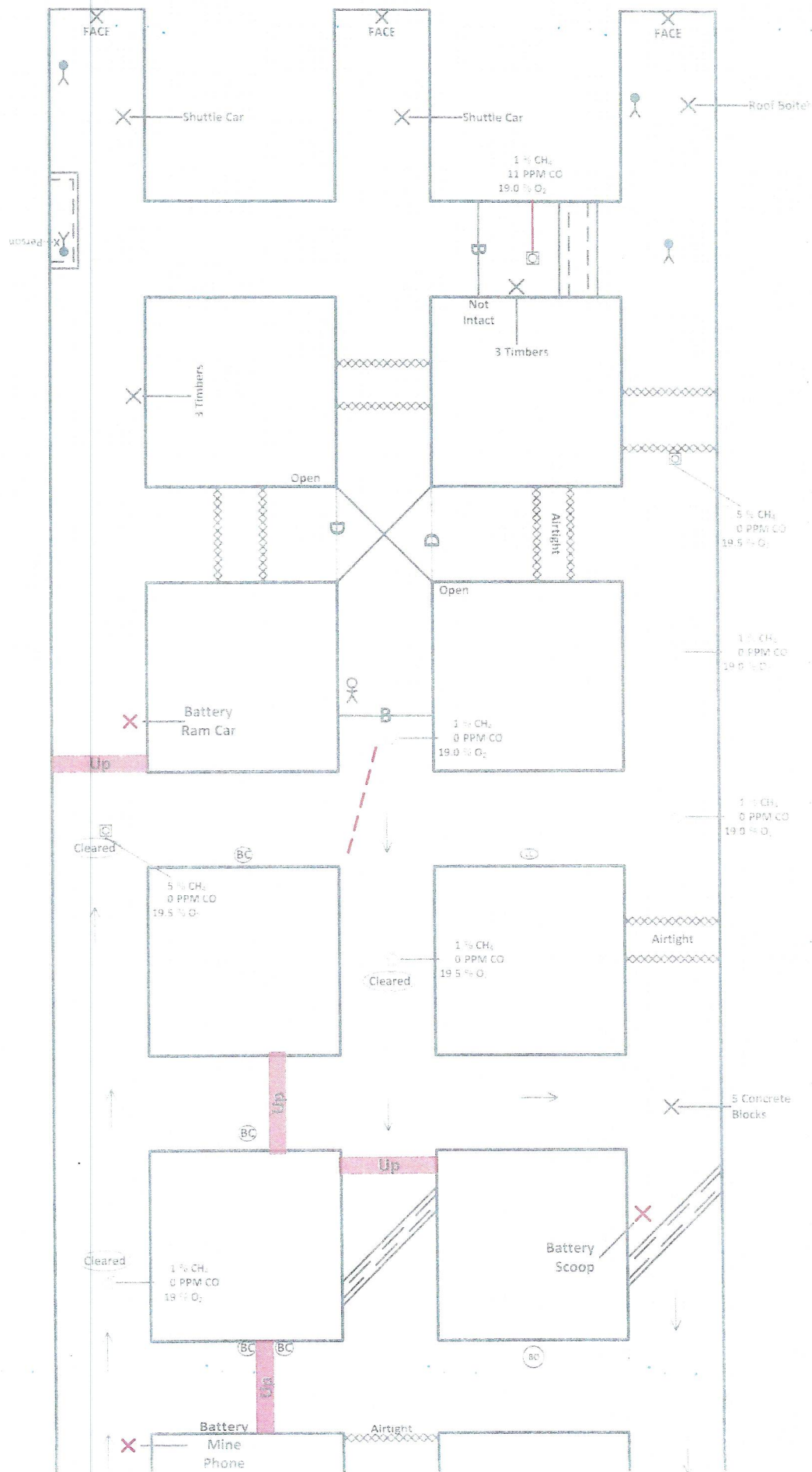
# Harlan County Safety Days Day 2



# Harlan County Safety Days Day 2



# Harlan County Safety Days Day 2





FINAL  
VENT

